

TS-590SG Setup for WSJT-X and LF/MF operation

Larry – W7IUUV 28DEC19

This document was produced after upgrading from a TS-590S to a TS-590SG. There are some relatively minor but subtle differences between the two radios that caused me a lot of extra effort to upgrade. I'll try to cover all of the steps needed to get the 590SG operational in MY station. YMMV!!

Some of the settings were discovered in various on-line sources. Some were discovered by very careful study of manuals including the "S" manuals and especially the "SG" User manual and the "SG" "In Depth Manual". These manuals are available on the Kenwood site and I recommend that you have them handy when working through the setup.

The first step is installing the required drivers in your computer. I use Windows 7 Pro 64 bit, so all of my procedures are based on the operating system. You will need to adjust for your OS if necessary. At a minimum you will need the audio driver and the com/USB driver available on the Kenwood site. These drivers for the "S" and the "SG" are the same, although you may want to update them if they are an earlier revision. I didn't, no need to fix something that's not broke.

You will need to know what com port number your OS has assigned to the driver. You can use the Windows device Manager to determine this or follow the instructions in the driver install and software install instructions. **YOU NEED TO KNOW THIS !!**

The "SG" has a few more Menu settings than the "S" so the Menu numbers for a given function are different. However the settings are the same for each function. I'll give both Menu numbers for those items that are critical to the WSJT-X setup. Any menu items not referred to below are left in the "DEFAULT" setting

The most critical Menu setup is for the USB audio. If the settings are not changed from default, it is unlikely you will be able to get WSJT-X to work like the WSJT-X user manual describes. After setting the audio to the new numbers, you should be able to follow the WSJT-X user manual setup and get the required results. Be VERY familiar with the WSJT-X user manual !!

The following assumes you are actually using the USB audio and not the analog audio available on the rear radio connectors.

SG menu #	S Menu #	Setting
69	63	USB
70	N/A	Rear
71	64	1
72	65	1
75	68	OFF

If you want or need to control any external devices such as antenna relays, you will need to set up the "Linear Amp Control Relay". Details can be found in the "In Depth Manual" for the "SG" on page 15. I recommend setting #2 as any delays could be a problem with external relays.

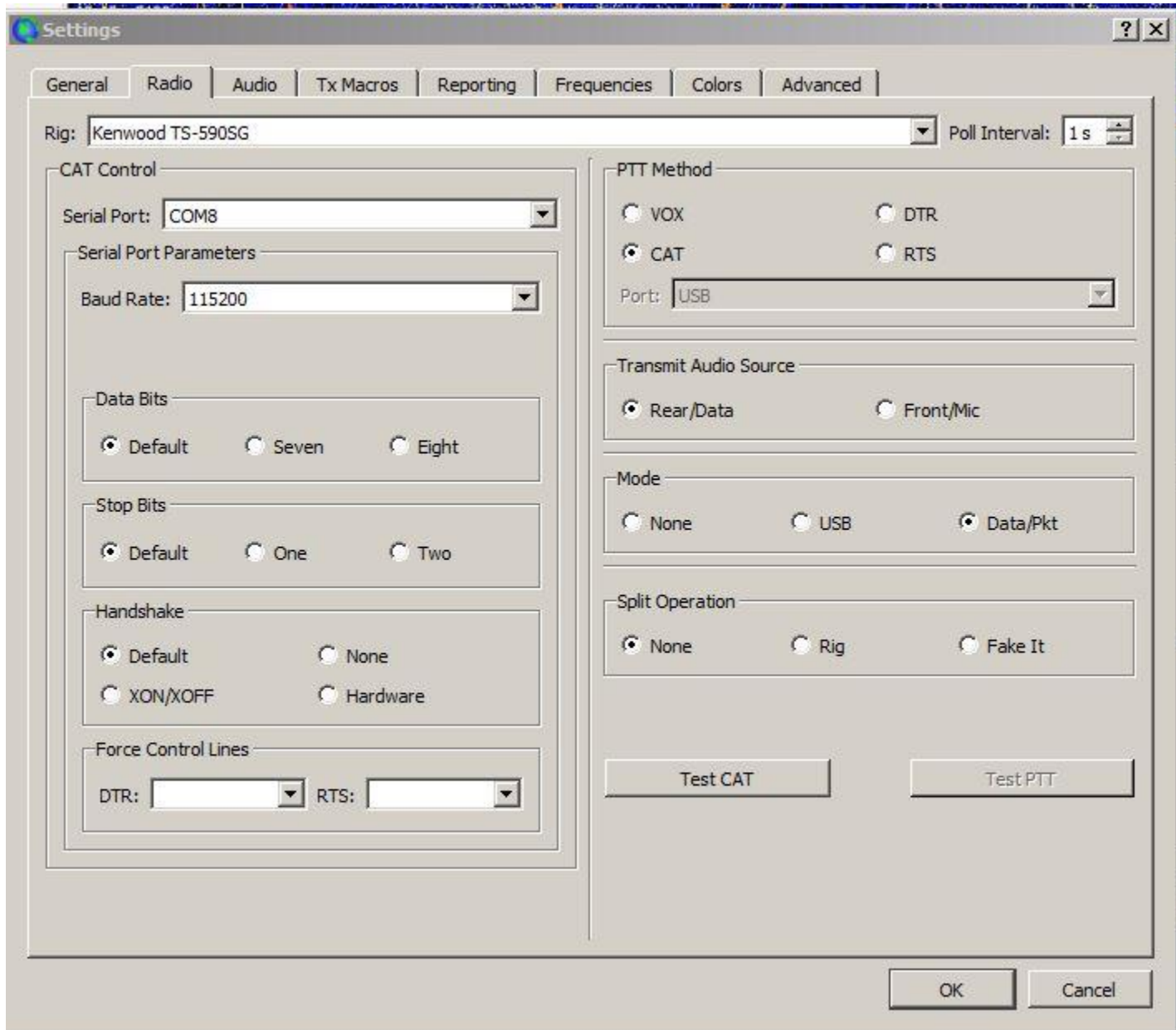
SG menu #	S Menu #	Setting
59	53	2

My TS-590S was never run on CAT control. I always used the hard wired PTT connected to my homebrew interface for transmit control and manually set everything else on the radio. Apparently the control circuitry internal to the TS-590SG is a little different and my interface box just would not work with it even though all the connections were identical. So, reluctantly, I resorted to using CAT control for PTT. Of course this meant I had to implement full CAT to get this functional.

"SG" menu numbers 67 and 68 both wound up being set to 115200.

The WSJT-X settings were troublesome. Note that the Serial Port setting is one of the COM ports rather than USB even though you use the USB connection. This is due to the driver emulating a COM port rather than a USB connection. You must use the COM port number specific to your installation as noted previously. COM8 is unlikely to be correct for you!

This is what I wound up with:



That's all I have as of this writing. If I make any changes I'll update this document as required. If you find an error, please let me know.